

Visualize and optimize your  
factory designs



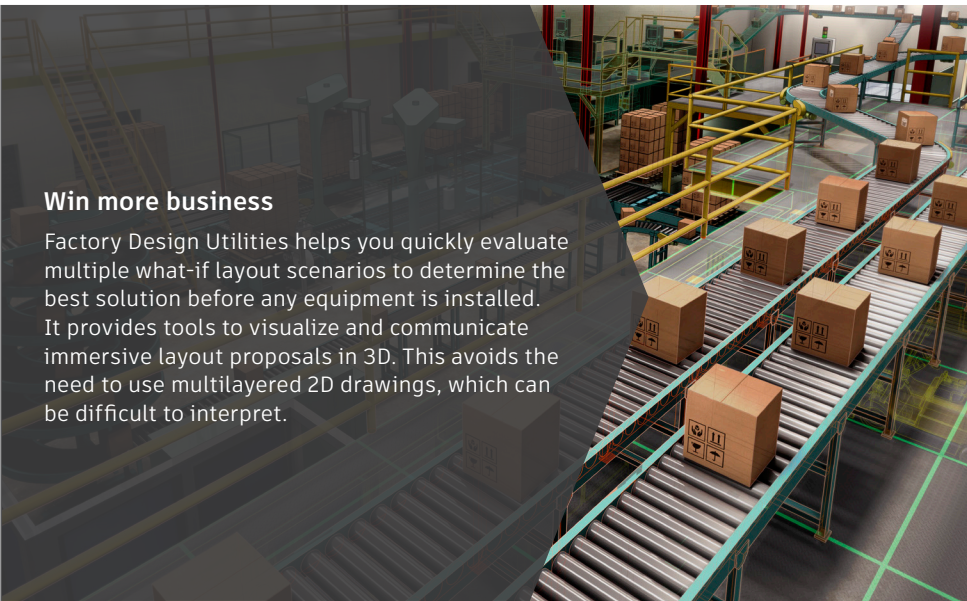


# Make informed decisions throughout the factory lifecycle with a digital factory model.

The Product Design Collection is the best way to access the most essential Autodesk software for product and factory design. It includes key products such as Inventor Professional, AutoCAD, and Navisworks Manage in addition to other software. Go to [www.autodesk.com/productdesign](http://www.autodesk.com/productdesign) to see the full list of products included in the Product Design Collection.

**Available only as part of the Product Design Collection.**

Autodesk® Factory Design Utilities is an interoperable 2D and 3D factory layout and optimization solution to design and communicate efficient layouts, by creating a digital model of your factory. It enhances Autodesk® AutoCAD® and Autodesk® Inventor® software with access to layout workflows and factory-specific content.

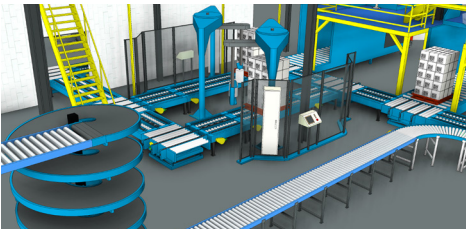


**Win more business**

Factory Design Utilities helps you quickly evaluate multiple what-if layout scenarios to determine the best solution before any equipment is installed. It provides tools to visualize and communicate immersive layout proposals in 3D. This avoids the need to use multilayered 2D drawings, which can be difficult to interpret.

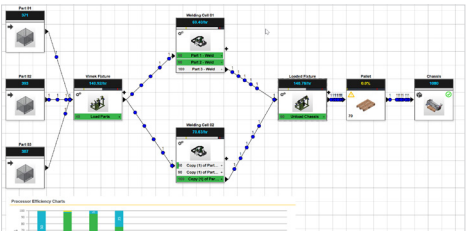
“This toolkit is so easy to integrate into our system. We can plan entire factories and work processes.”

–Jörg Duus  
Head of construction  
Feige Filling GmbH



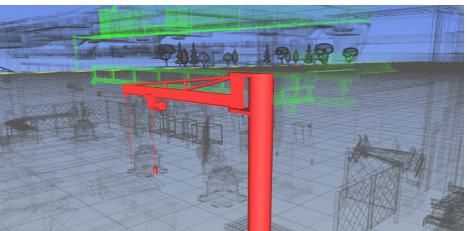
### Meet project schedules

Deliver layout projects on time and within budget with automated workflows and a factory-centric work environment in AutoCAD and Inventor. Move from 2D layouts to a 3D factory model, using a library of parametric factory content, instead of sketching it all by hand. Factory Design Utilities supports the DWG™ file format so you can build on top of existing data.



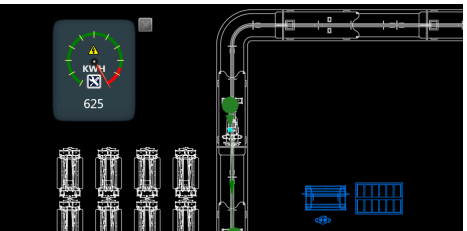
### Optimize performance with process analysis

Model, visualize, and simulate your manufacturing processes before you implement them. Build a functional model of your proposed assembly line, factory, or industrial machine and simulate its operation. Identify potential bottlenecks and optimize performance based on design criteria.



### Collaborate more effectively with stakeholders

Include models from suppliers in your layout. Reduce installation risks by analyzing the digital factory model for potential clashes and space constraints, before they become a problem on-site. With Autodesk® 360, you can manage your assets, collaborate, and share layout designs with various stakeholders online.



### Improve your factory layout process

Analyze existing 2D layouts for more efficient material flow and transform layout liabilities into profit-generating assets. Incorporate point cloud scans to capture the as-built state of your factory, to drastically reduce the time spent on manual measurement.

### 10 reasons to choose Factory Design Utilities

- Communicate design intent with 3D layouts to win more bids.
- Avoid installation issues by identifying equipment clashes and space constraints.
- Accommodate change requests in a 3D visual layout environment.
- Simulate manufacturing processes to identify potential bottlenecks.
- Improve team collaboration when managing changing product lines.
- Improve factory design efficiency by automating repetitive manual tasks.
- Save time on tape measurements by using laser scanning.
- Automatically update 2D drawings and the 3D layout if the layout changes.
- Avoid digital asset creation by using a supplied library of factory assets.
- Use standardized toolsets that are easier to install, configure, and support.

## Make Great Products

Autodesk manufacturing software helps you make better quality products, faster. Machine, print, inspect, and fabricate parts efficiently.

- Complete modular manufacturing solutions – CAM, additive, composites
- Manufacturing expertise to automate, optimize and integrate your manufacturing processes, in addition to your software
- Cloud-connected so you can collaborate and manufacture anytime, anywhere.

Learn more at [www.autodesk.com/MAKE](http://www.autodesk.com/MAKE).

## Learn more or purchase

Access specialists worldwide who can provide product expertise, a deep understanding of your industry, and value that extends beyond your software. To license Autodesk Factory Design Utilities software, contact an Autodesk Authorized Reseller. Locate a reseller near you at [www.autodesk.com/reseller](http://www.autodesk.com/reseller).

## Autodesk Education

Autodesk offers students and educators a variety of resources to help ensure students are prepared for successful design careers, including access to free\* software, curricula, training materials, and other resources. Anyone can get expert guidance at an Autodesk Authorized Training Center (ATC®) site, and validate skills with Autodesk Certification. Learn more at [www.autodesk.com/education](http://www.autodesk.com/education).

## Autodesk Subscription

Autodesk® Subscription gives you a greater advantage with powerful cloud-based services, access to the latest software, online technical support, and flexible licensing privileges.\*\* Learn more at [www.autodesk.com/subscription](http://www.autodesk.com/subscription).

## Autodesk 360

The Autodesk® 360 cloud-based framework provides tools and services to extend design beyond the desktop. Streamline your workflows, effectively collaborate, and quickly access and share your work anytime, from anywhere. Learn more at [www.autodesk.com/autodesk360](http://www.autodesk.com/autodesk360).

\*Free products are subject to the terms and conditions of the end-user license agreement that accompanies download of this software.

\*\*All Subscription benefits are not available for all products in all geographies. Please consult your Autodesk reseller or sales representative for more information.

Autodesk, the Autodesk logo, AutoCAD and Inventor are registered trademarks or trademarks of Autodesk, Inc., and/or its subsidiaries and/or affiliates in the USA and/or other countries. All other brand names, product names, or trademarks belong to their respective holders. Autodesk reserves the right to alter product offerings and specifications at any time without notice, and is not responsible for typographical or graphical errors that may appear in this document.

© 2017 Autodesk, Inc. All rights reserved.